



www.primat.si

# Instruction for use

**PRIMAT d.d.**

Industrijska 22  
SI - 2000 Maribor  
Tel.: +386/2-250-76-00  
Fax.: +386/2-252-26-89  
E-mail: info@primat.si

## ATM-PRIM

Grade III EX+GAS, IV EX+GAS – acc. to EN 1143-1: 2012

### INSTALLATION OF ATM-SAFE

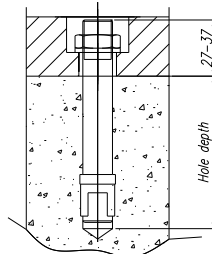
In order to correctly install the product it is necessary to take into account: the floor capacity (weight), external dimensions of the product, as well as door opening.

### ANCHORING OF ATM-SAFE

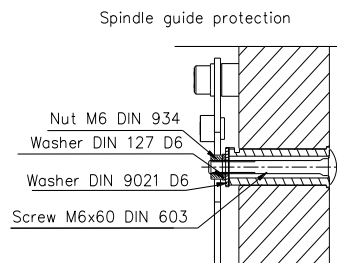
At the bottom of the ATM safe there are four anchoring holes. There is also fifth hole with increased diameter Ø65mm for assembly of snap off detector.

#### Anchoring procedure:

- Place the ATM safe in location and check the functionality of the ATM safe by opening its door.
- Anchoring bolts M20x170 mm are required for fixing. Use only anchoring bolts with min. tensile strength 700 N/mm<sup>2</sup>.
- Using an electric drill with an impact effect and Ø20 mm concrete bit, start drilling the hole through the fixing point. The hole into the floor should be drilled to the depth of 130 mm. Min. strength of concrete floor should be 25 MPa.
- Remove the dust from the hole using a vacuum cleaner or similar.
- Check to ensure that total hole depth is sufficient to allow for bolt head to be recessed (picture 1). Insert the segment bolt into the hole with light blows of a hammer. Approx. 27-37 mm of the bolts should stand out of the floor. The nut must be screwed on top of the bolt so that the hammer touches it and does not damage the threads.
- Tighten the nut to 200Nm. Anchoring is then complete.



Picture 1



Picture 2

### Warning

In case that anchoring of the safe with attached anchoring material is not possible, due to specific circumstances, it is necessary to use alternative material for anchoring. This alternative anchor material must meet the following requirements: Screw min. tensile strength: 700N/mm<sup>2</sup>; Screw min. size M20 (metric) 3/4" (imperial), washer D20 DIN 125 A

### REMOVING THE PROTECTIVE ELEMENTS OF THE SPINDLE GUIDE FOR SECONDARY LOCK - Grade III GAS only

In case of installing a secondary lock (grade III GAS only) all protective elements of spindle guide must be removed. (Picture 2).

#### Removal procedure - Spindle guide protection:

- With boltwork doors open locate the Nut M6 DIN 934 in second lock area. Unscrew nut D6 and remove screw and washers.
- Continue with installation of the secondary lock.

#### Important warning:

- Secondary lock can only be installed by authorized personnel. For further information please contact the producer PRIMAT d.d. Maribor SLO.
- When secondary lock is removed all protective elements must be attached to fill the spindle guide as shown on Picture 2.

### OPENING AND LOCKING THE PRODUCT

#### Door opening procedure:

- Open the first lock (follow lock user manual for procedure information),
- Open the second lock,
- When both locks are open turn the handle in a clockwise direction with right door. With left door turn the handle ccw.

#### Door locking procedure:

- Close the door by pushing the door shut without holding on to the handle (read and follow the below stated safety warning). On the safes with installed automatic self locking boltwork the handle will turn automatically to the closed position when the safe door is closed.
- If the handle does not turn automatically to the close position (automatic closing function not installed) rotate the handle by hand to the closed position (vertical alignment).
- Close the secondary lock,
- Close the primary lock.

### Warning!

To avoid any chance of injury keep yourself and any object away from the turning path of the handle when closing the door. Never trigger the automatic self locking function with safe door open. This can lead to potential serious injuries.

#### Important warning:

- After finishing the closing/locking procedure – do not leave the key in the lock of the door! Keep the key safely – take care that no authorized person can obtain the key! The lock should be converted to a new pair of keys immediately if one of the keys is lost.

### MAINTENANCE

Regular maintenance will ensure correct operation of the ATM-safe. The following procedures should be carried out at yearly intervals:

- The closing and opening operation of bolt work and locks.
- Operation of handle.
- Opening of the ATM-safe door to the end position.
- Lubrication of the door hinges through the lubrication points on the hinges.

### Warning

Never lubricate the key-or combination lock with oil. Should the safe be attacked by attempted forced entry or suffer fire damage please check with your insurers as to the position on future repairs and servicing by authorized personnel/safe engineers, as this could invalidate your certification if not carried out correctly.

### WARRANTY

Warranty and certification expire in case of a burglar attack, fire or unprofessional intervention in the construction and function of the safe for ATM. In such case please contact the producer PRIMAT d.d. Maribor SLO immediately.