

STARPRIM

Grade I, II, III, IV, IV EX, V – acc. to EN 1143-1

INSTALLATION OF PRODUCT

In order to correctly install the product it is necessary to take into account: the floor capacity (Weight), external dimensions of the product, as well as door-width and the fact that it opens 180°.

ANCHORING OF SAFE

All products have one fixing point in the bottom for anchoring with the exception of Grade 5 and all double door products, which have two points in the bottom. With custom made safes there is also an option for three anchoring holes in the bottom. Alternatively it is possible to anchor through the rear wall – this must be done by a professional safe installer or authorised service organisation. With specially customised safes it is possible to use up to five anchors in the rear wall. The drawing with positions for additional anchoring holes is added to the Instruction and use in case of specially customised safes. All additional anchoring holes must be in use.

Anchoring procedure:

- Place the safe in location and check the functionality of the safe by opening its door.
- Anchoring bolts M16×150 mm are required for fixing. Use only anchoring bolts – min. tensile strength 700 N/mm².
- Using an electric drill with an impact effect and 16 mm concrete bit, start drilling the hole through the fixing point. The hole into the floor should be drilled to the depth of 120 mm /125 mm for the Grade 5 safes. Min. strength of concrete floor should be 25 MPa.
- Remove the dust from the hole using a vacuum or similar.
- Check to ensure that total hole depth is sufficient to allow for bolt head to be recessed – see the drawing.
- Insert the segment bolt into the hole with light blows of a hammer. The nut must be screwed on top of the bolt so that the hammer touches it and does not damage the threads.
- Tightening the nut to a 100 Nm. Anchoring is then complete.

Warning

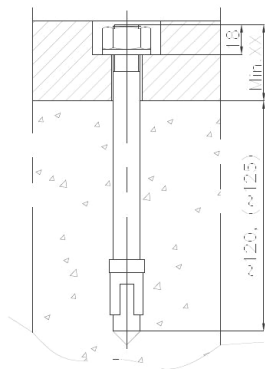
In case that anchoring of the safe (base) with attached anchoring material is not possible, due to specific circumstances, it is necessary to use alternative material for anchoring. This alternative anchor material must meet the following requirements: Tensile strength of screw min. 700N/mm²; Diameter of screw min.M16; Diameter of washers min. (mm) D17/D30x3

Warning:

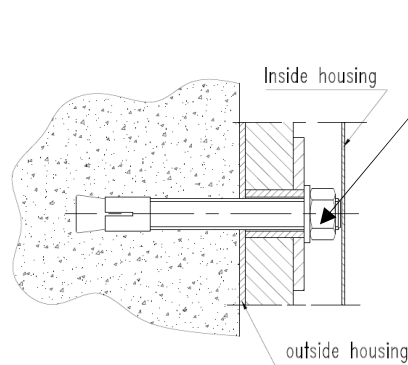
After anchoring, the safe is now stable – In cases that the anchoring procedure is not complied with the insurance rating may not be applicable and there is a risk of the safe being unstable, it could tip forward.

Cable hole:

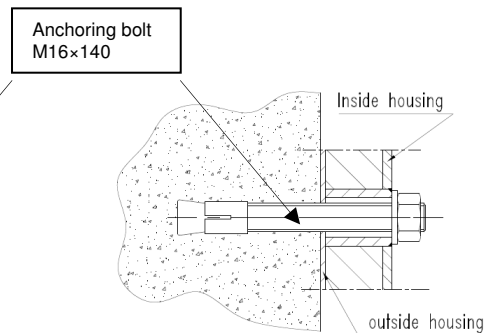
Cable hole Ø9 (through safe back wall) must be plugged if not used.



Anchoring through the bottom



Anchoring through the rear wall
STARPRIM 1/N, 2/N, 1, 2, 3 in 4



Anchoring through the rear wall
STARPRIM 3/N in 4/N

OPENING AND LOCKING THE PRODUCT

Standard locking: 1 key lock with 2 keys and for Grade 4 and 5: 1 key lock with 2 keys and 1 mechanical combination lock. The operating instructions for the mechanical combination lock are separately included in the safe. In case of electronic combination lock the same applies.

Opening/locking procedure of the door – Grade 1-3:

- Push or lift the key hole cover until the key hole access is fully open.
- Insert the key in to the hole in such a way that the longer part of the key bit is downwards - push key fully in.
- Turn the key in clockwise direction by about one half of a turn and the lock opens. In this position it is impossible to remove the key from the hole.
- When the lock is open turn the handle upwards in a clockwise direction by about quarter of a turn and open the safe by pulling the door towards you.

Opening/locking procedure of the door – products of Grade 4:

- Open the mechanical combination lock or electronic combination lock **first** in accordance with the separate instructions.
- Push or lift the key hole cover until the key hole access is fully open.
- Insert the key in to the hole in such a way that the longer part of the key bit is downwards - push key fully in.
- Turn the key in clockwise direction by about one half of a turn and the lock opens. In this position it is impossible to pull the key from the hole.
- When the lock is open turn the handle upwards in a clockwise direction by about quarter of a turn and open the safe by pulling the door towards you.



www.primat.si

Instruction for use

PRIMAT d.d.

Industrijska 22
SI - 2000 Maribor
Tel.: +386/2-250-76-00
Fax.: +386/2-252-26-89
E-mail: info@primat.si

Opening/locking procedure of the door – products of Grade 5:

- Open the mechanical combination lock or electronic combination lock **first** in accordance with the separate instructions.
- Pull the locking plug from the key cover.
- Insert the key in to the hole in such a way that the longer part of the key bit is downwards - push key fully in.
- Turn the key in clockwise direction by about one half of a turn and the lock opens. In this position it is impossible to pull the key from the hole.
- When the lock is open, push the handle upwards in a clockwise direction by about quarter of a turn and open the safe by pulling the door towards you.

Locking procedure/closing the door – Grade 1-3:

- Close the door first and the door handle turn to the close position.
- Lock the key-lock in counter clockwise direction by about one half of a turn, so that the key can be removed. The safe is locked.

Locking procedure/closing the door – Grade 4:

- Close the door first and the door handle turn to the close position.
- Lock the key-lock in counter clockwise direction by about one half of a turn, so that the key can be removed.
- Turn the knob of the mechanical combination in a counter clockwise direction one turn. The product is locked.

Locking procedure/closing the door – Grade 5:

- Close the door first and the door handle turn to the close position.
- Lock the key-lock in counter clockwise direction by about one half of a turn, so that the key can be removed.
- The locking plug must be put into the key cover.
- Turn the knob of the mechanical combination lock turn in a counter clockwise direction one turn. Check: the locking plug can not be pull out! The product is locked.

Important warning:

After finishing the closing/locking procedure – do not leave the key in the lock of the door! Keep the key safely – take care that no authorised person can obtain the key!

Electronic lock - Important warning

The electronic lock is set with factory code when supplied. Alter this immediately change factory code to your own personal code for security reasons. Do not use any personal or other similarly well known data when selecting this code.

Grade 3, 4 and 5 have the ability to have an additional electronic security device fitted for safes.

MAINTENANCE

Regular maintenance will ensure correct operation of the safe. The following procedures should be carried out at 12 monthly intervals:

- The closing and opening operation of bolt work and locks.
- Operation of handle and gearing.
- Opening of the safe door to the end position.
- Lubrication of the door hinges through the lubrication points on the hinges.

Warning

Never lubricate the key or combination lock with oil.

Should the safe be attacked by attempted forced entry or suffer fire damage please check with your insurers as to the position on future repairs and servicing by authorised personnel/safe engineers, as this could invalidate your certification if not carried out correctly.