



According to EN 1143-1:2005

Security grades:

CEN 0, CEN I, CEN II, CEN III, CEN IV, CEN V, CEN VI, CEN VII, CEN VIII, CEN IX.

Vault doors are a crucial component of vault rooms and they must assure the same or even higher level of safety than the vault rooms themselves.

CASHBOXES DEPOSIT SAFES CASHIER SAFES
FOR THE FINANCIAL INSTITUTIONS



Cash boxes are designed for protecting valuables and documentation in banks, hotels etc.

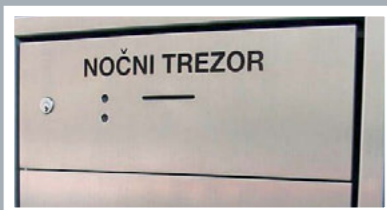
Module systems of sets of cash boxes enables wall and freestanding setting up and also further extendings.



The deposit safes are intended for saving your cash. The deposit safe is composed of the safe unit and the deposit unit. The deposit unit enables throwing small-bags with cash or bundle in the safe unit through the throwing-hole. Max. dimension: 65x250x195 mm (HxWxD). Different sizes available!



NIGHT SAFES



With or without Deposit - unit.



Night safes are used in banks and other Institutes for the outside office hours cash deposits in Safebags by authorized customers.

Mechanical version

Elektronical version

- opening of the door with the magnetic card
- opening with bar-code on the Safebag.



PRIMAT tovarna kovinske opreme, d. d.

Primat, d. d., Industrijska ul. 22, SI - 2000 Maribor

Phone: +386/0/2 25 07 615

Fax: +386/0/2 25 22 689

E-mail: info@primat.si

www.primat.si

Best solutions for your security!



Security equipment complies with the European standard. It assures your peaceful sleep even in the most unpredictable situations.

BANKPRIM
SAFES FOR AUTOMATIC TELLER MACHINES (ATM SAFES)

STARPRIM
FREE - STANDING SAFES

VARPRIM
SECURE CABINETS

MODULPRIM
VAULT ROOMS

MASSIVPRIM
VAULT ROOMS

DOORPRIM
VAULT DOORS



PRIMAT TOVARNA KOVINSKE OPREME D.D.
TRADITION SINCE 1901



Available basic security grades according to EN 1143-1:2005
Grade L, Grade I, Grade II, Grade III, Grade IV, Grade V.

Upgraded ATM safes PRIMAT according to EN 1143-1:2005
Grade CEN III, Grade CEN IV.

PRIMAT ATM-safes are now also upgraded:

- ⊕ ATM safes EX version / protected against solid explosives
 - Grade IV-EX
 - Wall thickness: 40 mm

- ⊕ ATM safes EX-Gas version / protected against internal gas explosions
 - Grade III-EX-Gas
 - Grade IV-EX-Gas
 - Testing with gas mixture: 80 Liters
 - Wall thickness: 40 mm

- ⊕ Global knowledge and long experience in ATM safes manufacturing.

⊕ If you are interested in our ATM Safes programme and would like our offer, we kindly ask you, to submit following information:

- Internal/External dimensions
- Security grade
- Number/Size/Location of system openings
- Locking
- Colour
- Quantity

STARPRIM
FREE – STANDING SAFES

5 product groups – 5 STARS – 5 security grades
Do trust the Stars! The Stars will protect your valuables!



STARPRIM 1
Burglary-resistant 30/50 RU*

STARPRIM 2
Burglary-resistant 50/80 RU*

STARPRIM 3
Burglary-resistant 80/120 RU*

STARPRIM 4
Burglary-resistant 120/180 RU*

STARPRIM 5
Burglary-resistant 180/270 RU*

*RU = Resistant Unit (partial attack/full attack)

European Standard:
EN 1143-1:2005

VARPRIM
SECURE CABINETS



Security grade S1 according to EN 14 450



Shelf



Inner compartment
(VP 1950/930-1200, H=300 mm)



Inner compartment
(VP 1580-1220-860/600, H=180 mm)

Pull-out frame with divider



Pull-out drawer



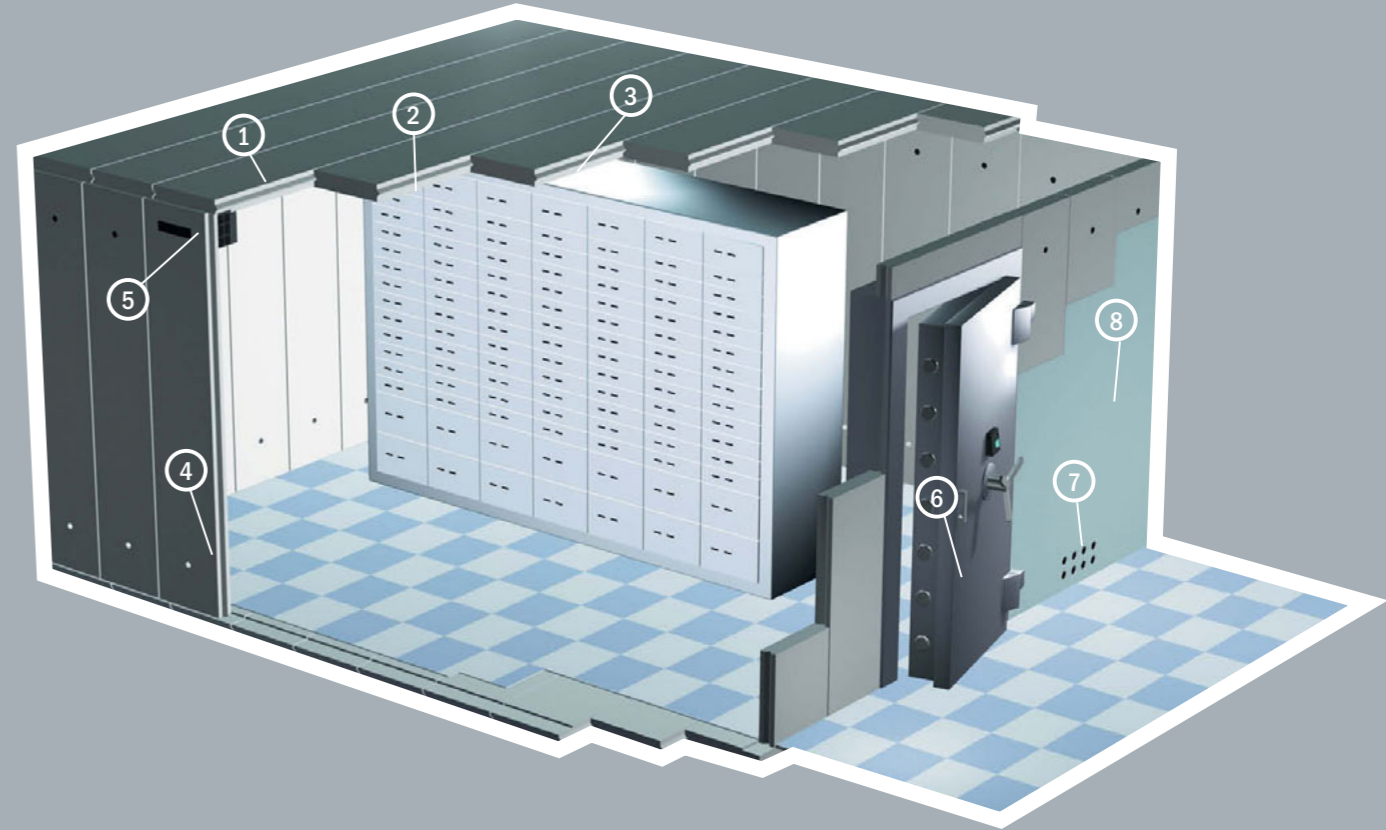
Pull-out shelf



Modular construction Series MODULPRIM according to EN 1143-1:2005

Security Grades: CEN O, CEN I, CEN II, CEN III, CEN IV, CEN V, CEN VI, CEN VII, CEN VIII, CEN IX.

- | | |
|----------------------------------|-----------------------|
| 1. Floor and ceilings components | 5. Ventilation system |
| 2. Construction of components | 6. Vault Door |
| 3. Inner covering | 7. Airing |
| 4. Cables | 8. Outer coverings |

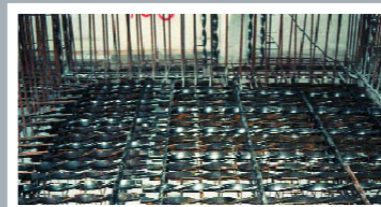


MASSIVPRIM
VAULT ROOMS

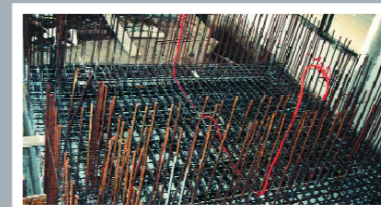
Solid construction Series MASSIVPRIM according to EN 1143-1:2005

Security grades: CEN V, CEN VI, CEN VII, CEN VIII, CEN IX, CEN X, CEN XI, CEN XII, CEN XIII.

Upgraded Security grades: CEN IX KB, CEN X KB, CEN XI KB, CEN XII KB, CEN XIII KB.



Installation of floor armoring elements



Installation of armoring elements and static armoring elements is performed at the same time



Installation and assembly of wall armoring elements



Armoring elements and static armoring elements of a vault room, prepared for panelling and filling with concrete mixture



A vault room after filling with concrete mixture and de-panelling



Installation and assembly of vault door